



Revolving
Doors



Sliding
Doors



Hospital
Doors

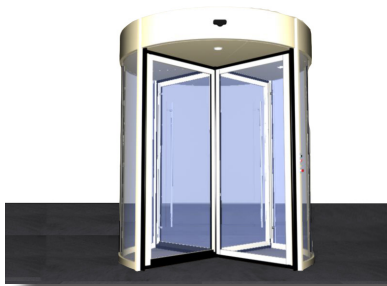


90 Degree
Doors



Circular
Sliding Doors

Standard Automatic
Revolving Door



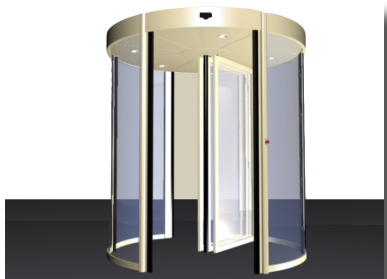
4-Wing-Automatic Revolving Door



3-Wing-Automatic Revolving Door



Night Shield



Bookfold Mechanism (break-out)



“Thermal insulation, chic design, smooth entrance and versatility... If these are what you are looking for in an entrance, APRIMATIC MR30/SA is made for you.”

APRIMATIC MR30/SA Standard Automatic Revolving door provides you with varieties of insulated and energy efficient entrance alternatives with its versatility. Also with its chic nature, it completely fits your building's exterior design.

APRIMATIC MR30/SA also provides you with smooth entrance and reliable performance with the best available mechanism.

APRIMATIC MR30/SA gives you a combination of aluminium, glass, slim profiles and insulation materials that meet energy efficiency and a smooth entrance to satisfy all your demands. The chic design meets versatility to complete your building's exterior. Its reliable performance with thermal and noise insulation makes it even more useful.

“You Dream, We Make”





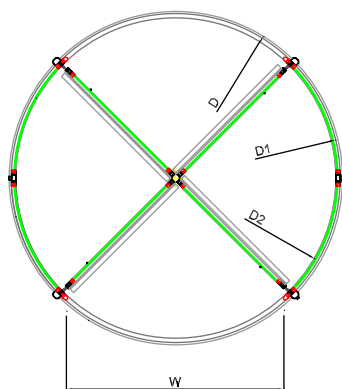
D	D1	D2	W/3	W/4	G	K
2000	1966	1906	860	1270	2100-3100	200-1000
2100	2066	2006	920	1340	2100-3100	200-1000
2200	2166	2106	960	1410	2100-3100	200-1000
2300	2266	2206	1010	1480	2100-3100	200-1000
2400	2366	2306	1060	1550	2100-3100	200-1000
2500	2466	2406	1110	1620	2100-3100	200-1000
2600	2566	2506	1160	1690	2100-3100	200-1000
2700	2666	2606	1210	1760	2100-3100	200-1000
2800	2766	2706	1260	1830	2100-3100	200-1000
2900	2866	2806	1310	1900	2100-3100	200-1000
3000	2966	2906	1360	1970	2100-2500	200-1000
3100	3066	3006	1410	2040	2100-2500	200-1000
3200	3166	3106	1450	2110	2100-2500	200-1000
3300	3266	3206	1510	2180	2100-2500	200-1000
3400	3366	3306	1560	2320	2100-2500	200-1000
3500	3466	3406	1610	2390	2100-2500	200-1000
3600	3566	3506	1660	2460	2100-2500	200-1000

* Dimensions are in millimeters.

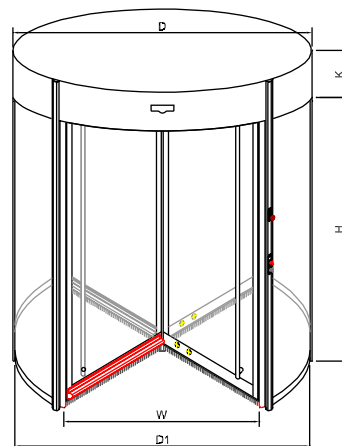
** Dimensions are for reference and are subject to change upon static requirements.

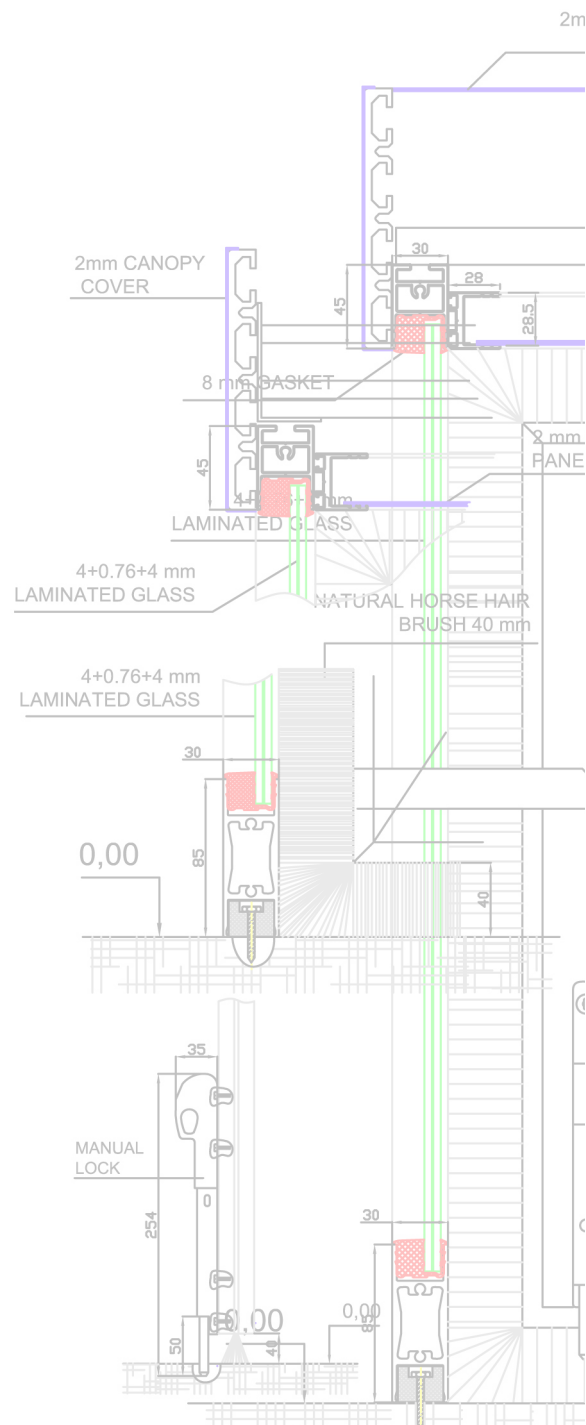
*** Special dimensions are available upon request.

**** Dimensions are for information purposes only and are subject to change upon static requirements.



D: Outer Canopy Diameter
D1: Outer Ground Diameter
D2: Inner Diameter
W: Passage Width
G: Passage Height
K: Canopy Height





Technical Specifications

Supply	220 V AC / 50-60 Hz
Motor	RevoMASTER AC Motor
Ambient Temperature	-20 °C - +55 °C
Fixed Curved Glasses	Standard 4 + 4 Laminated Glasses
Side Wall Cladding	Optional
Wing Glasses	Standard 8 mm Tempered Glasses
Door Handles	Vertical or Horizontal Stainless Steel Door Handles
Speed Control	Standard
Disabled Passage System	Standard
Lighting	Energy Saving Halogen Lighting
Locking	Electromagnetic Motor Lock
Hand Edge Safety	Standard
Heel Safety	Standard
Extra Safety Package	Optional
Anodized Finish	Standard
Electrostatic Powder Coating	Standard
Stainless Steel Cladding	Optional
Floor Mat	Optional
Floor Ring	Optional
Waterproof Ceiling	Optional
Night Shield	Optional
Breakout Mechanism	Optional
Push&Go System	Standard
Underground Mechanism	Optional
Microwave Radar	Standard
Summer Mode	Standard
Continuous Slow Mode	Standard
Night Mode	Standard
Circular Air Curtain	Optional
Espagnolette Lock	Optional

* Contact for special requests upon project basis.

** Some specifications are not available for static requirements.

*** Bookfold mechanism is not available for underground mechanism.

**** Contact for detailed information.



Hardware Specifications

Activation APRIMATIC

revolving doors provide users with a wide range of activation alternatives.

Various activation options such as radar, code panel, card reader, touchless sensor switch, elbow button, fingerprint reader, remote control, etc. are manufactured to work compatible with the system. These options provide you with an entrance control free of problems.

Disabled Passage

Disabled passage system consists of a button and the systems connected to this button. When the system is activated, rotation speed of the wings decreases so that an easier and smoother access can be provided for disabled or old people.

This system can be applied on the fixed wings as a standard feature and it also can be applied according to the buildings' architectural design optionally. Also break-out system which is called bookfold mechanism can be applied to the door on demand.



Safety Package

APRIMATIC revolving door systems provide you with complete protection against any and all incidents by the flawless safety system they possess.

With the vertical safety edges placed on the rotating direction of the moving wings and the vertical scanner sensors which are placed on the canopy and positioned as the rotation direction of the wings; any kind of jam between the wings and the fixed frames are out of question.

Inside the door there are horizontal safety edges placed under the wings to the rotation direction. These safety edges stop the door with the slightest contact and prevent people inside the door from getting harmed. The curtain safety sensors can be installed inside the door depending upon project requirements. These systems are positioned on top of the wings, on the rotation direction and scan area of wings' movement. These sensors stop the door if any object is on the wings' way before the object makes contact with the wing.



Glasses

As standard; 4+4mm curved laminated glasses are used on fixed frames and 8 mm tempered glasses are used on the moving wings. 5+5 mm curved laminated and 10 mm tempered glasses can also be used upon demand. Providing these qualities and dimensions; any kind of color and colored reflected glasses can be used as options on the system. Glasses are protected from outside effects by glass seals.

Mechanism APRIMATIC

revolving door systems' canopies are manufactured as modular; from only aluminium alloy and without any kind of welding.

Motor and controller units are designed specially for revolving door systems, within our research and development facilities and in cooperation with top European companies. These systems are manufactured to far exceed your expectations.



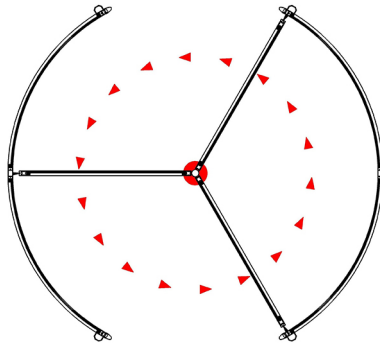
Emergency System

APRIMATIC revolving doors have an emergency stop system. It consists of a button and system connected to this button. In case of an emergency when this button is pushed the door stops immediately. Automatic versions can be used as manual with this system. In some cases, this is a preferred system as it provides the user with the flexibility of using the door both automatic and manual.

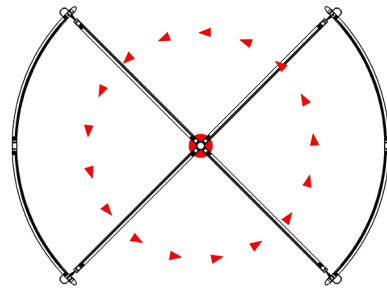
Wings

A harmony is created by the unique designed frame profiles and natural horse hair brushes surrounding the frame in the wings of APRIMATIC revolving door systems. With this harmony; air, dust and noise insulation is maximized. The unique design used in the profiles provides APRIMATIC revolving door systems with toughness along with an extremely chic look.

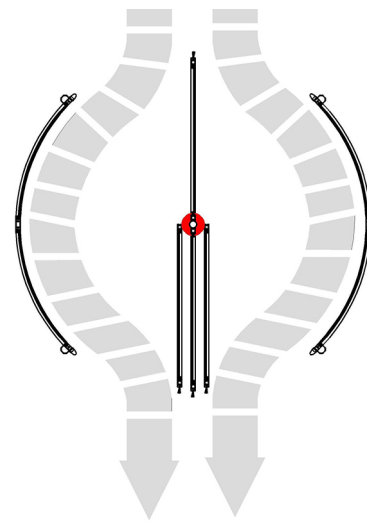
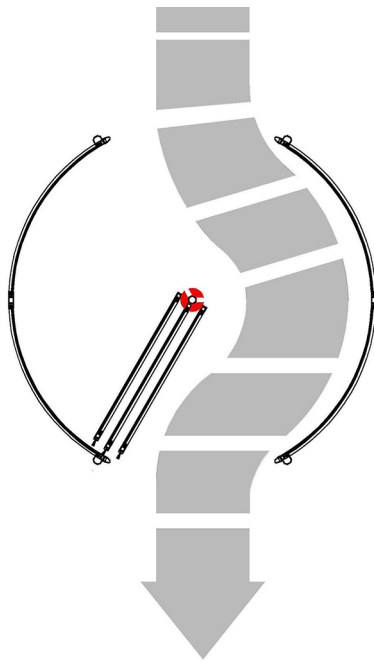




3-Wing-Operation



4-Wing-Operation



Bookfold Mechanism (break-out)

Bookfold mechanism can be applied to automatic revolving doors. This system which can be applied to both 3 or 4 wing versions makes the wings to book fold in case enough power is applied to the wing. This system, also known as break-out system, is activated by pushing the door wings hard in case of an emergency. The wings folding around the central shaft, leaves a clear and empty passage to outside. Bookfold mechanism works as described on the right;

When the mechanism is activated and the wings bookfold around the shaft, sensors on the wing axle sense the movement; once this movement is sensed the motor stops immediately and the rotation halts. Door continues its normal movement when the wings are retrieved to the original position.

This system provides rapid evacuation of the building. Besides, this can also be used in day time upon demand to enable manual usage of the door. This is a function preferred especially in shopping malls, hospitals, etc.

